




RAYNES

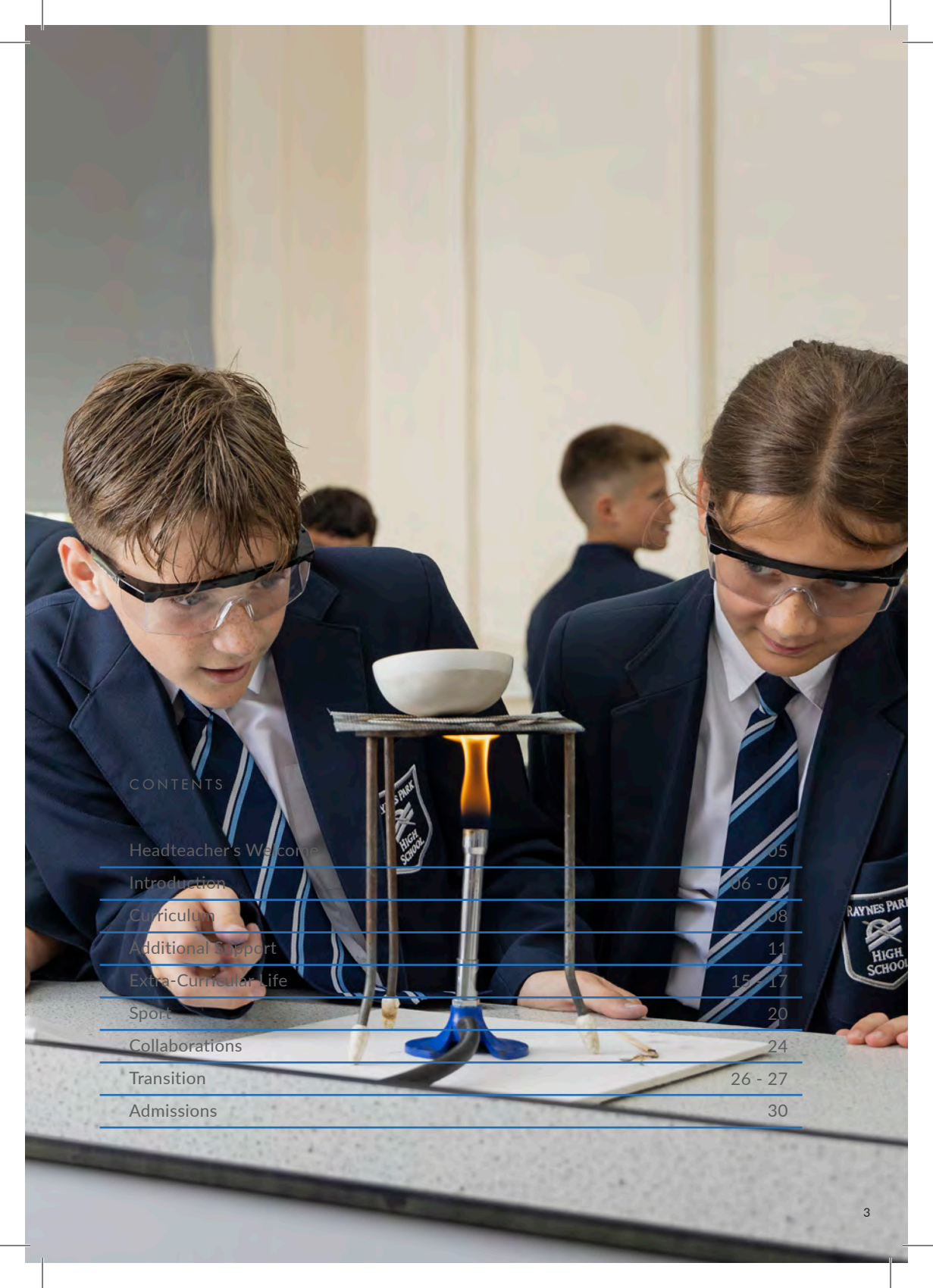
PARK HIGH SCHOOL

PROSPECTUS 2023 - 24



*So remember then, when you are grown
With important things to do,
That once you were young, and this song have sung
For you were at school here, too.*

- RPHS SCHOOL SONG, W H AUDEN -



CONTENTS

Headteacher's Welcome	05
Introduction	06 - 07
Curriculum	08
Additional Support	11
Extra-Curricular Life	15 - 17
Sport	20
Collaborations	24
Transition	26 - 27
Admissions	30



A VERY WARM WELCOME TO RAYNES PARK HIGH SCHOOL.

I am extremely proud to be the Headteacher at Raynes Park High School where our core purpose is to create an inclusive community of successful learners. We are committed to excellence and our mission is to develop resilient, respectful young people who make exceptional progress and achieve their full potential.

My unrelenting focus is to provide the best possible educational experience for our students within a well-ordered and purposeful learning environment.

We have very high expectations of our students and our ethos for learning and achievement is based on exceptional teaching, a challenging curriculum and high standards of behaviour. Through a culture of ambition and success, everyone at RPHS is driven towards continuous self and school improvement.

We also strive to provide a first class experience outside of the classroom. There is a wide and varied range of enrichment and extra-curricular opportunities and these contribute as much to the development and success of our students as their academic experiences. We have been awarded Tim Henman Scholarships for talented students to pursue their

interests out of school and we have a strong partnership with Fulham Football Club, offering their post-16 programme to girls and boys in our sixth form.

The school has made rapid improvements in recent years; our most recent Ofsted inspection rated us as good in all categories and we are committed to further driving up standards in our quest to be exceptional in all that we do.

We know how overwhelming it can feel when it comes to choosing the right school for your child but if you do choose RPHS, we know this will be the start of a long, happy association with our school and we warmly invite you to be part of our future.



KJ. Taylor

MISS KJ TAYLOR

AN INCLUSIVE COMMUNITY OF SUCCESSFUL LEARNERS.

Founded in 1935, Raynes Park High School provides a well-rounded, dynamic education and creates exceptional opportunities for its young people. Our students are at the heart of all we do; we are aspirational for their futures, collectively and individually. We balance academic achievement, success in sport and creative fields with exceptional pastoral care and a forward-thinking, 'can-do' attitude.

Our ethos is based upon the '3 Rs', which encapsulate everything we strive towards:

RESPECT

Mutual understanding and respect is at the heart of the Raynes Park High School ethos. All members of the school community know that their behaviours have an effect on their own learning and that of others. Participation in extra-curricular activities and house events instil teamwork and build a sense of pride. Being honest, considerate and inclusive helps to build a productive and harmonious learning environment.

RESILIENCE

There is more to education than exams, and emotional wellbeing and mental health is key to achieving excellence in all areas of school life. Through a strong pastoral team and home/school partnership, students are supported to become confident, happy, lifelong learners. Teachers are committed to challenging students to persevere and achieve their full potential, regardless of ability or background.

"Raynes Park High School has given me the opportunity to develop my skills outside of the classroom which has greatly improved my confidence"

RESULTS

We strive for excellence in all that we do. Staff celebrate school achievements, as well as students' involvement in the wider community. Through quality teaching, extra-curricular opportunities and pastoral focus, Raynes Park High School prepares students to become responsible, resilient citizens who positively contribute to our society.



A LIFELONG LOVE OF LEARNING.

RPHS is proud to provide a dynamic learning environment with high quality teaching. The curriculum supports students in building strong, transferable skills, as well as supporting their personal development.

All students experience an innovative curriculum focused on providing an engaging experience in which they can make excellent progress from whatever level they start.

KEY STAGE 3

Students study an appropriate and well balanced range of subjects in groups relevant to their ability and tutor groups. Learning is designed to be engaging and challenging to all students.

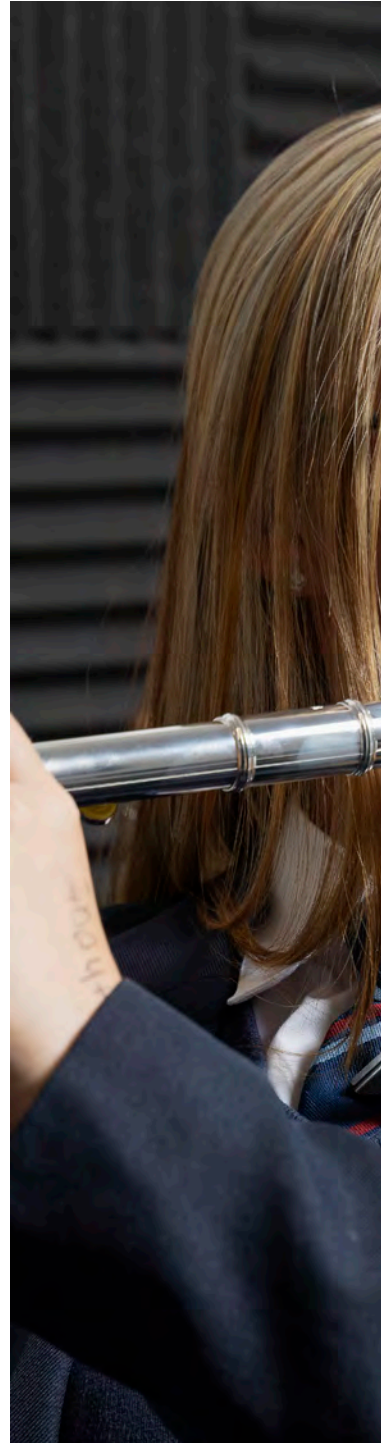
KEY STAGE 4

Students will have made choices about the subjects they study, and the curriculum is individually built around these preferences to ensure each student remains motivated and stretched.

KEY STAGE 5

Students are able to specialise in their chosen subjects and continue with either A-levels or vocational subjects in our Sixth Form Centre

Students' progress is carefully monitored at all stages, and our aspiration is that every student makes exceptional progress. Students benefit greatly from the outstanding facilities and resources that RPHS offers.





AN EXCEPTIONAL EDUCATION FOR ALL.

Staff at RPHS are committed to giving every student the support they need to develop their individual talents to the full, in preparation for the demands of the outside world. To ensure students achieve the success that they deserve, there is a range of additional support in place within our firm, yet flexible, school environment.

FORM TUTORS

Meeting with students every day, the Form Tutor's role is central to the welfare and success of students. Form Tutors will highlight achievement and also communicate regularly with parents/carers if a student would benefit from any specific interventions.

HEADS OF YEAR

Heads of Year track student progress and follow up on any concerns related to behaviour, effort, attendance and punctuality. There is also an emphasis on ensuring that students are supported in overcoming any barriers which they face.

WORKING WITH FAMILIES

Frequent contact and close co-operation between home and school is essential to supporting your child. This is achieved through regular communications home via e-mail, our weekly e-Bulletin, termly school newsletter and website, as well as events such as Parents Evenings and Academic Target Setting Day.

ACCESS CENTRE

The Access Centre at Raynes Park High School is Merton LA's specialist, secondary provision for students with autism. The Access Centre enables students to participate in the broad range of curricular activities of the main school with the appropriate level of support, whilst providing a place and staff expertise for some very specific and individual needs.

The Access Centre, Additionally Resourced Provision (ARP), achieved the National Autistic Society (NAS) Accreditation Award in July 2019 and again in July 2022. We are delighted to once again achieve this specialist status. The award shows we are meeting the standards of good practice for our students with autism.

SEN DEPARTMENT

The SEN Department at Raynes Park High School ensures students with special educational needs or a disability are able to access the curriculum effectively.

PASTORAL TEAM

Our Pastoral Team is responsible for supporting students in an informal way in order to address any barriers to learning. Drop-in workshops at lunchtimes tackle a range of topics including Friendships, Self-Esteem, Anger Management, Resilience through Art and Conflict Resolution.

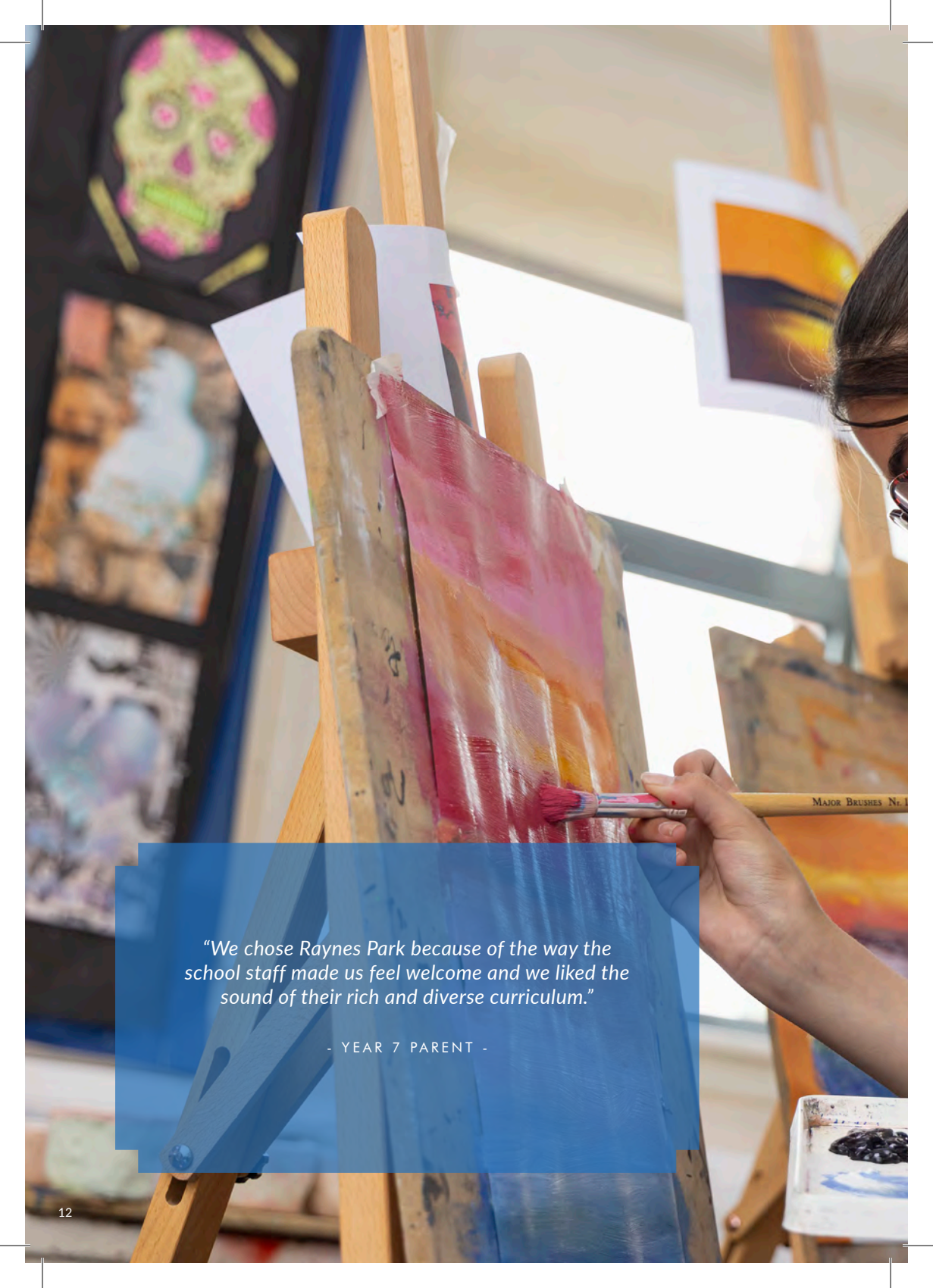


“The support for students with Special Educational Needs and/or Disabilities (SEND), and for those who speak English as an additional language, is a strength of the school. Students receive personalised, intensive support so they achieve well.”

OFSTED



RESPECT
RESILIENCE
RESULTS



"We chose Raynes Park because of the way the school staff made us feel welcome and we liked the sound of their rich and diverse curriculum."

- YEAR 7 PARENT -



PRIDE PARTICIPATION PERFORMANCE



"I was lucky to be able to take individual Music lessons when I started at Raynes Park High School and now have been able to pursue Music as a GCSE subject"

PERSONAL DEVELOPMENT

School life at Raynes Park High is varied and exciting both inside and out of the classroom. With our strong sporting tradition and rich programme of extra-curricular activities, students quickly become involved in new interests and hobbies.

PERFORMING ARTS

The Performing Arts department gives students the chance to showcase their artistic, dramatic and musical talents.

Every year the department puts on the school's annual musical. Our most recent productions include Grease and Buggy Malone.

MUSIC

The Music department gives students the opportunity to create their own music on Apple Macbooks. Students also have the option to join bands, orchestras or to take individual lessons to learn how to play a particular instrument.

SPORTS

Students are given the opportunity to take part in a range of sporting activities both in lessons and through extra-curricular opportunities.

Whether playing for fun or as part of one of our many teams, whatever their ability, all students are encouraged to participate.

HOMEWORK SUPPORT

Homework Club offers a quiet and productive place to do homework and ask for help from staff when needed. All homework clubs have computer

and printing facilities.

JOIN THE CLUB

We offer a wealth of extra-curricular activities during lunch and after school. There are a wide variety of clubs to get involved in. These clubs can offer new learning opportunities, as well as forging new friendships.

EXPEDITIONS, FIELD STUDIES & TRIPS

In order to apply what they are learning in lessons, students will experience exciting visits. For those with the urge to explore, there is the opportunity to take part in Duke of Edinburgh from Year 10.

WELLBEING

At RPHS we value student wellbeing and welfare and work hard to promote a positive learning environment and positive mental health across our school. We pride ourselves on our comprehensive Pastoral and Safeguarding teams who are able to provide outstanding levels of pastoral care to fulfil our school values and support our students.

A multitude of support is provided in-house to ensure the wellbeing needs of our students are met, such as Emotional Literacy Support Assistance (ELSA) intervention, mentoring and wellbeing check in's. We also work in partnership with a number of external agencies to provide specialist support to students. Students are able to be referred to these agencies via the Student Wellbeing Manager.





TECHNOLOGY


With two fully-equipped kitchens and large technology workshops, many students choose to get involved in clubs outside of their DT lessons. Whether it is learning to use a sewing machine or working together to cater for a school event, there are many opportunities to have fun while learning new skills.

HOUSE SYSTEM

Students have many opportunities to develop their personalities and showcase their talents with a wide range of inter-House activities such as sports competitions and events to raise money for charities. Throughout the year, these events can include art, music, drama, sport and technology. Students earn House points through participating in these events and by performing well academically via the reward system. The four Houses: Gibbs (red), Halliwells (yellow), Miltons (blue), and Newsoms (purple) are named after the school's original Housemasters.

STUDENT VOICE

At RPHS we really value the opinions of our students and greatly appreciate the varied leadership qualities that are displayed by so many within our school community. Our Student Voice system runs through every aspect of our school and provides a platform for all opinions to be heard, creating a real vehicle of change at RPHS. We believe our students have a great deal to offer with regards to the direction of our school and they are inspired to fulfil their potential, in all aspects of their school life.



*"This school gives you the foundations to succeed.
Why can't it be you? It happens to students from
RPHS, and it happened for me."*

- CHRIS POWELL, ALUMNUS -
FOOTBALLER (ENGLAND INTERNATIONAL)



SPORT FOR ALL.

The school has a long tradition of offering a wide range of physical activities to all its students in order to encourage an active lifestyle, build teamwork and nurture talent. From football to table tennis, every student can find where they excel. Teams compete in district, regional and national championships.

FOOTBALL IN EDUCATION PROGRAMME IN PARTNERSHIP WITH FULHAM FOOTBALL CLUB - AVAILABLE FOR BOYS AND GIRLS AGED 16-19

Our well established partnership with Fulham Football Club has enabled us to work with the Premier League Football club to provide an excellent programme allowing talented footballers aged between 16 and 19 to combine a programme of academic study alongside your training and fixtures. This programme has been running since 2016 for male footballers and we are delighted to be launching a programme for female footballers

in September 2023, allowing girls the same opportunities as the boys, which include:


- A broad academic programme of study (A Levels and Vocational Courses)
- Train where professional footballers would at Motspur Park (Home to FFC First Team)
- Coaching from Fulham's UEFA accredited coaches
- Regular fixtures across the league and cup(s) at Under-19 level against teams such as Brentford and Chelsea
- High quality pastoral support

Register your interest to be part of our Football in Education Programme from September 2024 using the links below:

Boys:
www.fulhamfc.com/foundation/education-and-training/football-and-education

Girls:
www.fulhamfc.com/news/2022/july/19/girls-football-and-education-coming-to-raynes-park





"RPHS students are truly resilient learners. They are curious, thoughtful and aren't afraid to face new challenges - even if it means not getting it perfect first time. It's an exceptional attitude which I've rarely seen at other schools."

- DESIGN & TECHNOLOGY TEACHER -



A SCHOOL AT THE HEART OF THE COMMUNITY.

With excellent facilities and an abundance of outside space, RPHS is a hub of activity. Collaborating with charities, businesses and sports organisations is key to providing an exciting and varied range of opportunities for our young people and those in the local area.

THE TIM HENMAN FOUNDATION

We are very proud to be a Tim Henman Foundation Community, which enables us to offer generous scholarships to students who are prevented from pursuing their talents due to lack of financial means. The funding supports students in order to participate further in their chosen area, be that within the arts, sport, or academic excellence.

CAREERS

Raynes Park High School is committed to promoting a career development culture by providing access to careers information, advice and guidance to students and careers education to help them build the skills they will need for working life. Alongside a comprehensive programme of careers education,

our careers fair and work experience benefit from our strong links with the local and wider community.

In October 2021 the school completed the Quality in Careers Standard and has been assessed as fully meeting the accreditation criteria. The Investor in Careers letter quoted "A strong commitment to achieve The Quality in Careers Standard has been demonstrated and we are pleased to confirm that your evidence shows that you are fully meeting all the accreditation criteria, incorporating the Gatsby Benchmarks."

Careers education is an important element of a student's personal development and the opportunities at Raynes Park High School allow a student to evolve.

"The school is a welcoming, purposeful and sociable centre of learning."

OFSTED



GIVING STUDENTS THE BEST START.

At Raynes Park High School we understand that the move to secondary school can be a daunting and overwhelming one. To support you and your child, we have an induction programme of events to make sure that the transition to Raynes Park High School is successful and happy.

We have a dedicated Transition Team and Pastoral Team whose main priority is student wellbeing, getting to know your child's interests and talents and ensuring that your child settles into Secondary School.

TRANSITION MORNING

We begin the Transition process with an important event when students complete CATs tests. Meanwhile, parents are invited to meet with the Headteacher and key staff to find out more about the Transition process.

INDUCTION DAY

Year 6 students are then able to experience their first day at High School, taking part in a range of lessons and beginning to make new friends.

PARENT/CARER AFTERNOON

During Induction Day, parents will have the opportunity to meet with their child's tutor for the first time and meet key members of staff.

VISITING PRIMARY SCHOOLS

Our senior staff visit students and their teachers in their primary schools. These visits help to inform our pastoral team of how best to support students when they begin in September and gives students the chance to raise any concerns or ask questions they may have.

SUMMER SCHOOL

A week of activities at RPHS, when students start building new friendships, get to know the school and meet different members of staff.

"RPHS offers students a wide range of opportunities both in and out of the classroom and my child has flourished."

YEAR 7 PARENT



FIRST DAY OF SCHOOL

Year 7 are given time at school without any other students to help them settle in. Activities in tutor time and lessons throughout the first week create friendships, set expectations and ensure that students make a great start. They follow a bespoke transition curriculum which enables the students to bond over common topics.



TEAM BUILDING DAY

A fantastic day of team building activities for our new Year 7s on our sports ground. This day is always very well received by students and promises to be great fun, as well as working on key skills such as teamwork, agility and logic.



PARENT/CARER EVENINGS

Your first parent/carer evening will give you the opportunity to meet with your child's Form Tutor and discuss how they are settling into secondary school. These parents evenings will continue throughout their time at Raynes Park High School in order to support and monitor your child's academic progress and emotional wellbeing.



“Leaders carefully plan a curriculum so that individual students study subjects and gain qualifications that match their career aspirations. Students are well prepared for the next stages of their education and employment”

- OFSTED -



JOINING US AT RPHS.

We hope that your son or daughter is excited at the prospect of joining us at Raynes Park High School.

All student admissions to RPHS are processed through a Central Admissions Department based at Merton's Civic Centre. We are a popular choice so it is advised that you return your application form in plenty of time.

The Merton admissions department can be contacted at admissions@merton.gov.uk or on 020 8274 4906 where a member of staff will be able to advise you about availability of places and provide you with the relevant application form.

"I enjoyed the support and assistance I received from teachers at RPHS. I found the idea of going to University daunting but the staff supported me through the process and made it easier for me."

RICHARD - RPHS ALUMNUS

VISIT US

Should you wish to tour our school during a normal school day we will be offering Open Morning Tours on the 10th to the 12th October 9am to 11am. Please visit our website for more information and to book a ticket.

CAN WE HELP?

If there is anything we haven't answered, please contact us on the main school number or visit our website for further information at www.rphs.org.uk





ADDRESS

Raynes Park High School, Bushey Road, London SW20 0JL

PHONE

020 8946 4112

EMAIL

school@raynespark.merton.sch.uk

WWW.RPHS.ORG.UK

FOLLOW US ON TWITTER: [@OFFICIALRPHS](https://twitter.com/OFFICIALRPHS)

FACEBOOK: WWW.FACEBOOK.COM/OFFICIALRPHS

AND INSTAGRAM: [@OFFICIALRPHS](https://www.instagram.com/OFFICIALRPHS)

